



Section 2: Sector Policies

The policies within this Plan are designed to guide all marine and coastal users in terms of proposed and existing development(s) and activities. Users of this Plan must also comply with the National Marine Plan and other relevant legislation.

The general policies within Section 1 of the Plan provide a framework for the sustainable development and use of the marine and coastal environment. These general policies should be adhered to in advance of policies within Section 2 as they are all potentially relevant to any proposal for development or activity by any sector or user of the marine and coastal environment.

Section 2 outlines policy relating to the key current economic activities taking place in the Clyde Marine Region. These policies provide a framework to ensure that the economic, social and environmental benefits are delivered for each sector. The chapters are ordered in the same way as the National Marine Plan.

Each chapter follows the same format, this includes:

- A context which sets out a summary of the main information relevant to the policy area. More information on each of the areas can be found within the [Clyde Marine Region Assessment](#).
- Objectives and policies; objectives provide a measurable strategic aim or goal for each policy area and policies which will deliver the objectives are set out underneath.
- Maps are included at the end of the chapter. For the latest available spatial data, see [National Marine Plan interactive](#) (NMPi). It is recommended that NMPi is used in conjunction with this Clyde Regional Marine Plan.
- Links to further information on the policy area.



Chapter 13: Defence

Clyde Marine Region Context

Ministry of Defence activities in the Clyde Marine Region are concentrated at Her Majesty’s Naval Base (HMNB) Clyde at Faslane, home to the core of the UK Submarine Service. It is the largest single site employer in Scotland and supports around 12,000 direct and upstream jobs¹. There is also a Naval Armaments Depot located nearby at Coulport. The waters in the Clyde Marine Region are used for training and conducting naval exercises and by military vessels including submarines. HMNB Clyde and Clydeport are both Statutory Harbour Authorities within Gare Loch, Loch Long and Loch Goil, with overlapping jurisdiction.



Her Majesty’s Naval Base Clyde at Faslane.

For further detail on this sector, see Chapter 6.6 of the [Clyde Marine Region Assessment](#).

Objective and Policy



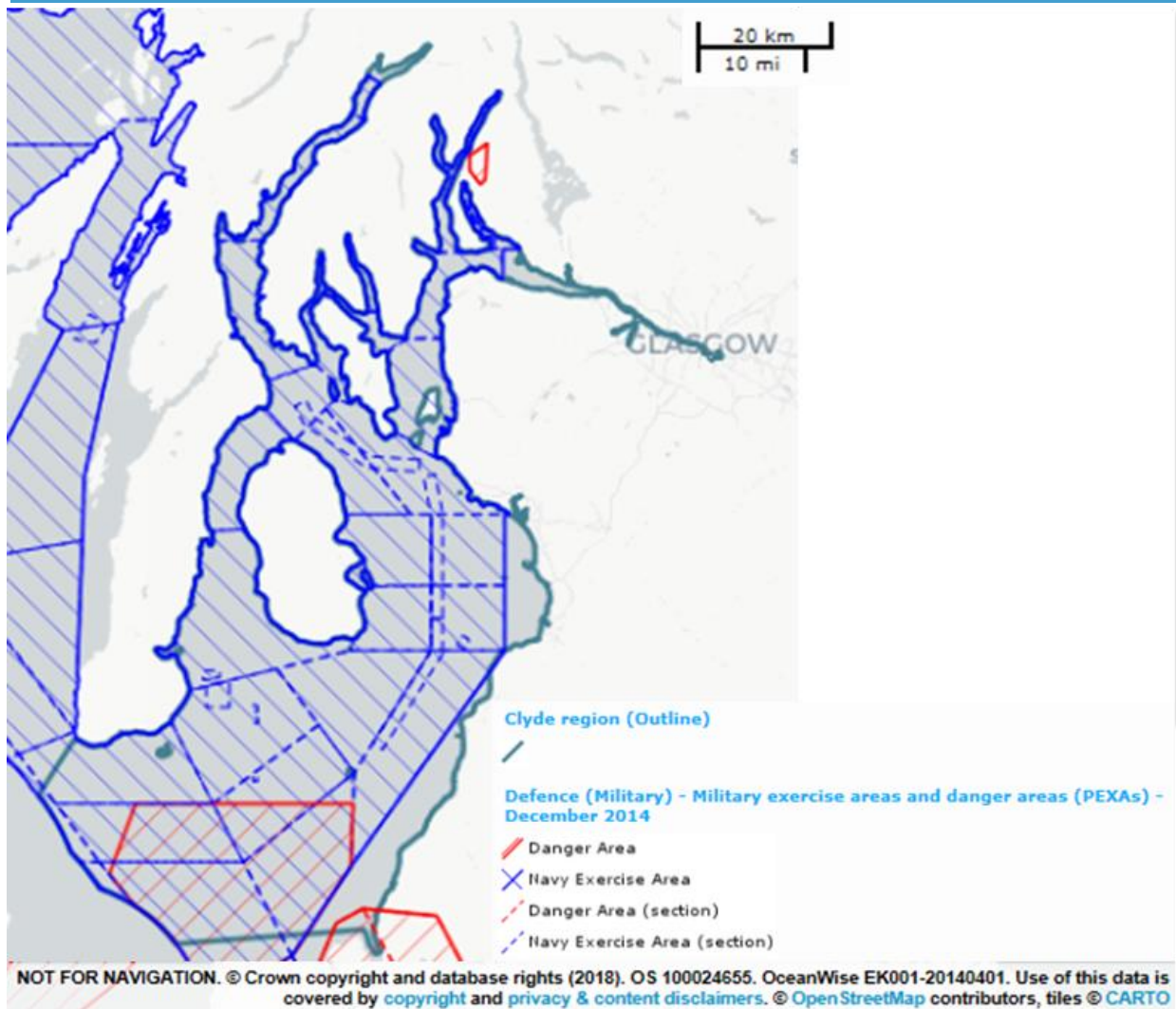
Objective DEF 1 **Support operations of Her Majesty’s Naval Base Clyde as the UK Single Submarine Operating Base, with due consideration of other marine users and the marine environment.**
 MEASUREMENT: Single Submarine Operating Base by 2023.

Policy – Management

Policy DEF 1 Her Majesty’s Naval Base Clyde will integrate increased levels of Ministry of Defence marine activity in the Clyde Marine Region in line with this Clyde Regional Marine Plan, ensuring wide engagement with other marine users.

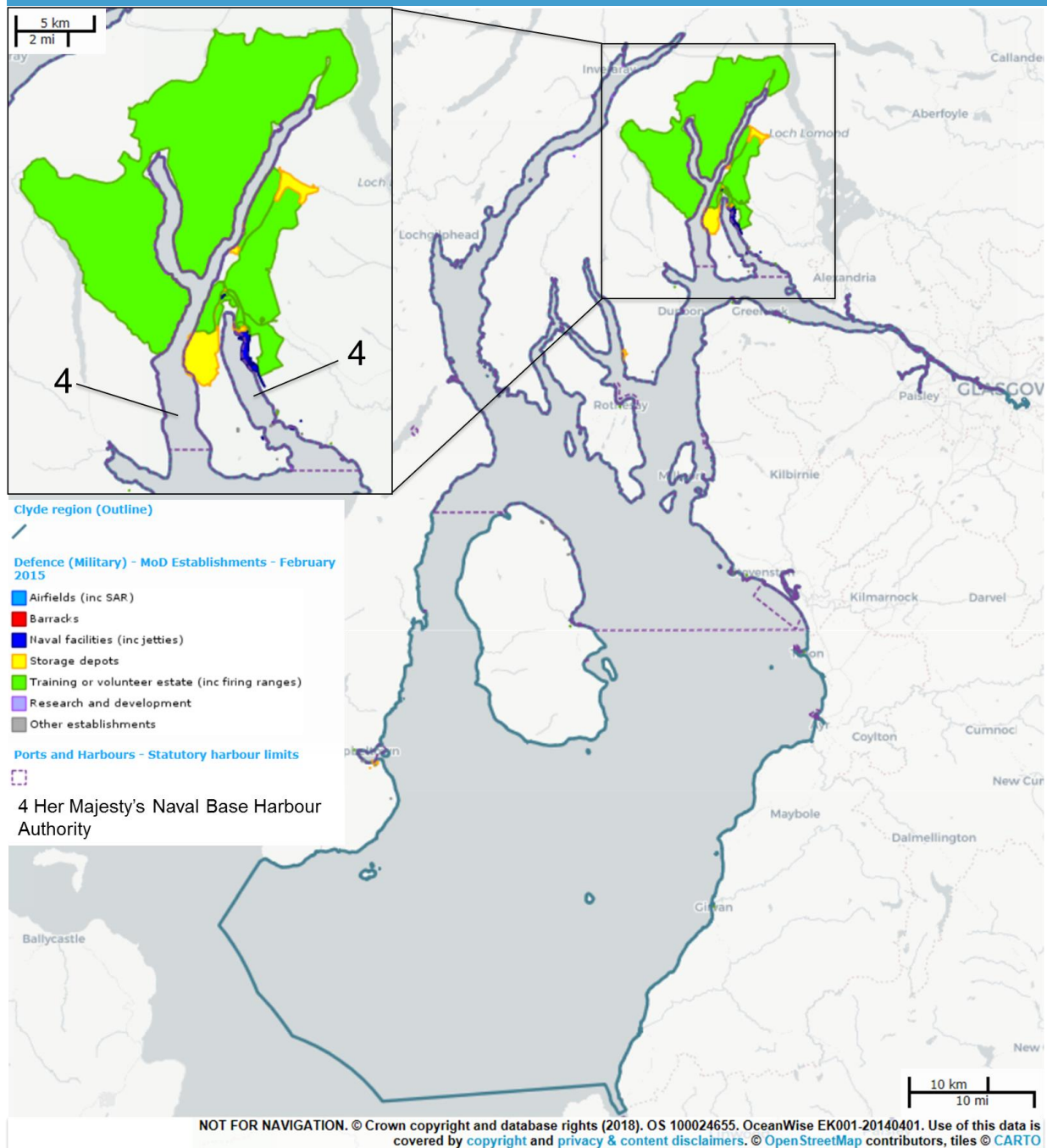
¹ Argyll and Bute Council, 2018

Map DEF 1 – Military exercise and danger areas in the Clyde Marine Region.



These maps are indicative only. For up-to-date mapping with interactive features, visit [National Marine Plan interactive](#).

Map DEF 2 – Defence establishments and Her Majesty’s Naval Base Harbour Authority in the Clyde Marine Region.



These maps are indicative only. For up-to-date mapping with interactive features, visit [National Marine Plan interactive](#).

Further information

[Notices and other information](#) for safe navigation in Gare Loch and Loch Long

Ministry of Defence UK [Code of Practice on Fishing vessel avoidance](#) and [Guidance on Fishing Vessels Operating in Submarine Exercise Areas](#).